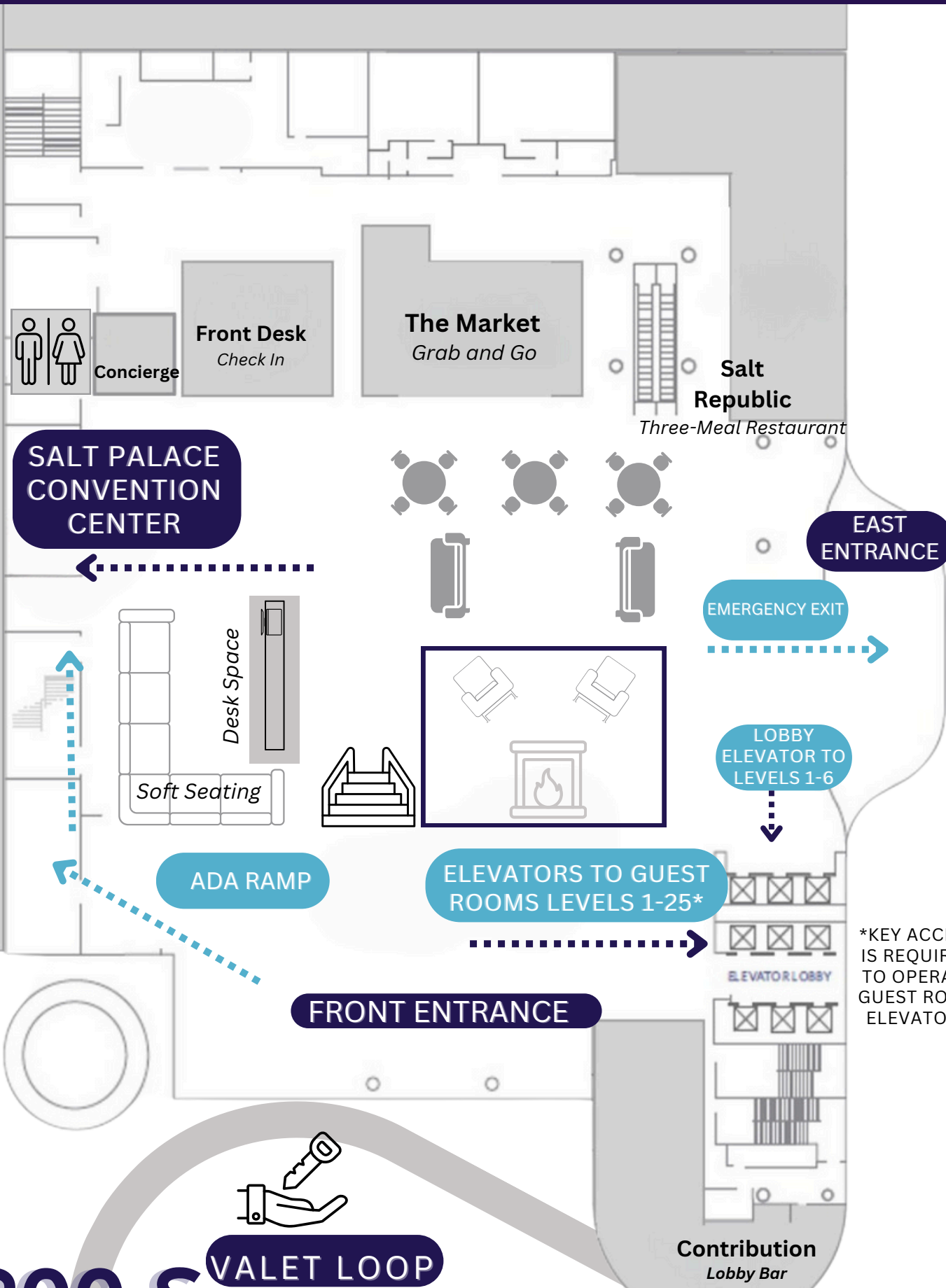
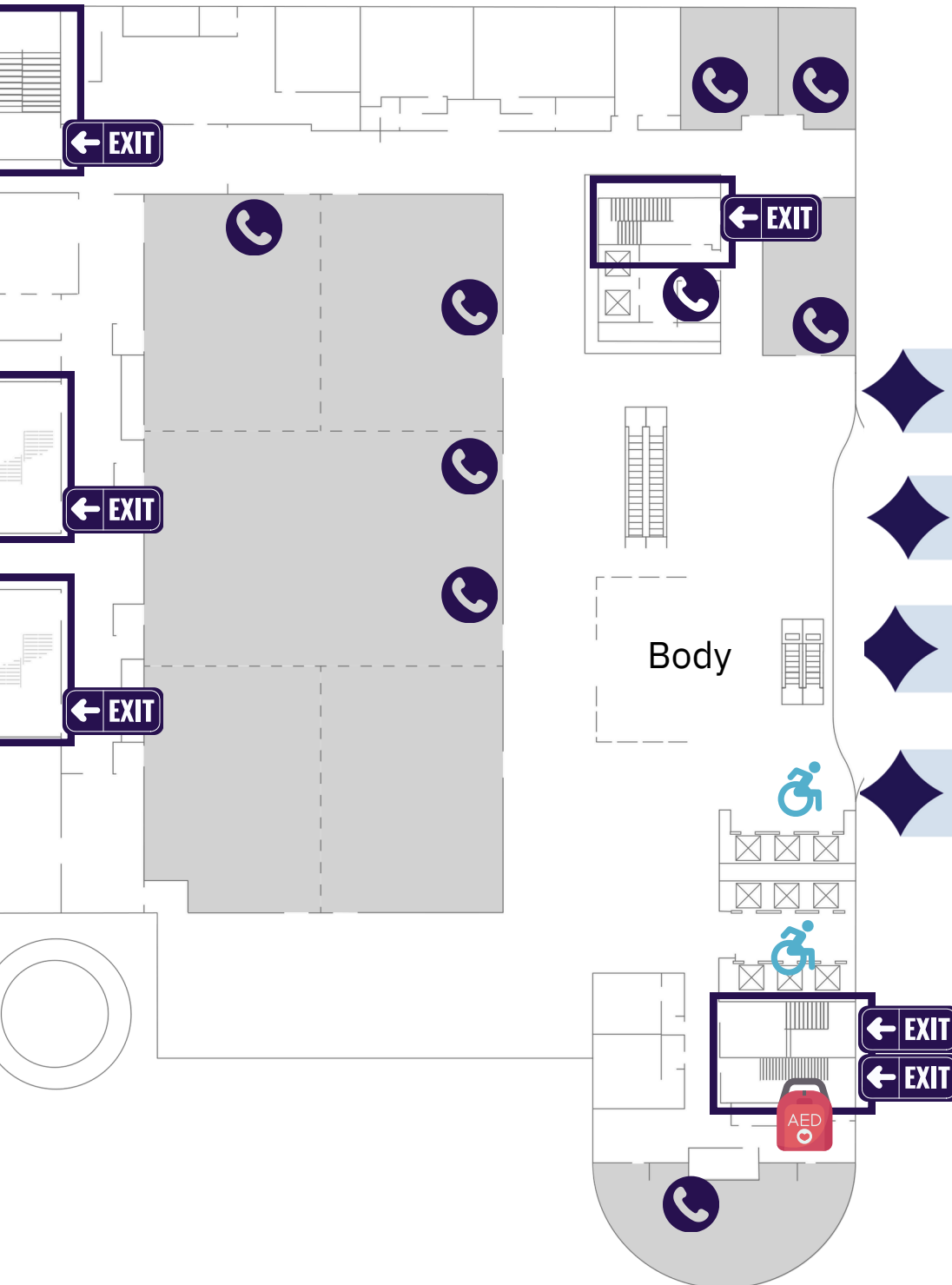


Lobby



*KEY ACCESS IS REQUIRED TO OPERATE GUEST ROOM ELEVATORS

Level 2



The **security and safety** of our guests and associates is of utmost importance to us.





If a **health, safety, or security** situation arises, we ask that you observe the following reporting protocol:

◆ If you have an **Emergency** Dial **55** from any House Phone

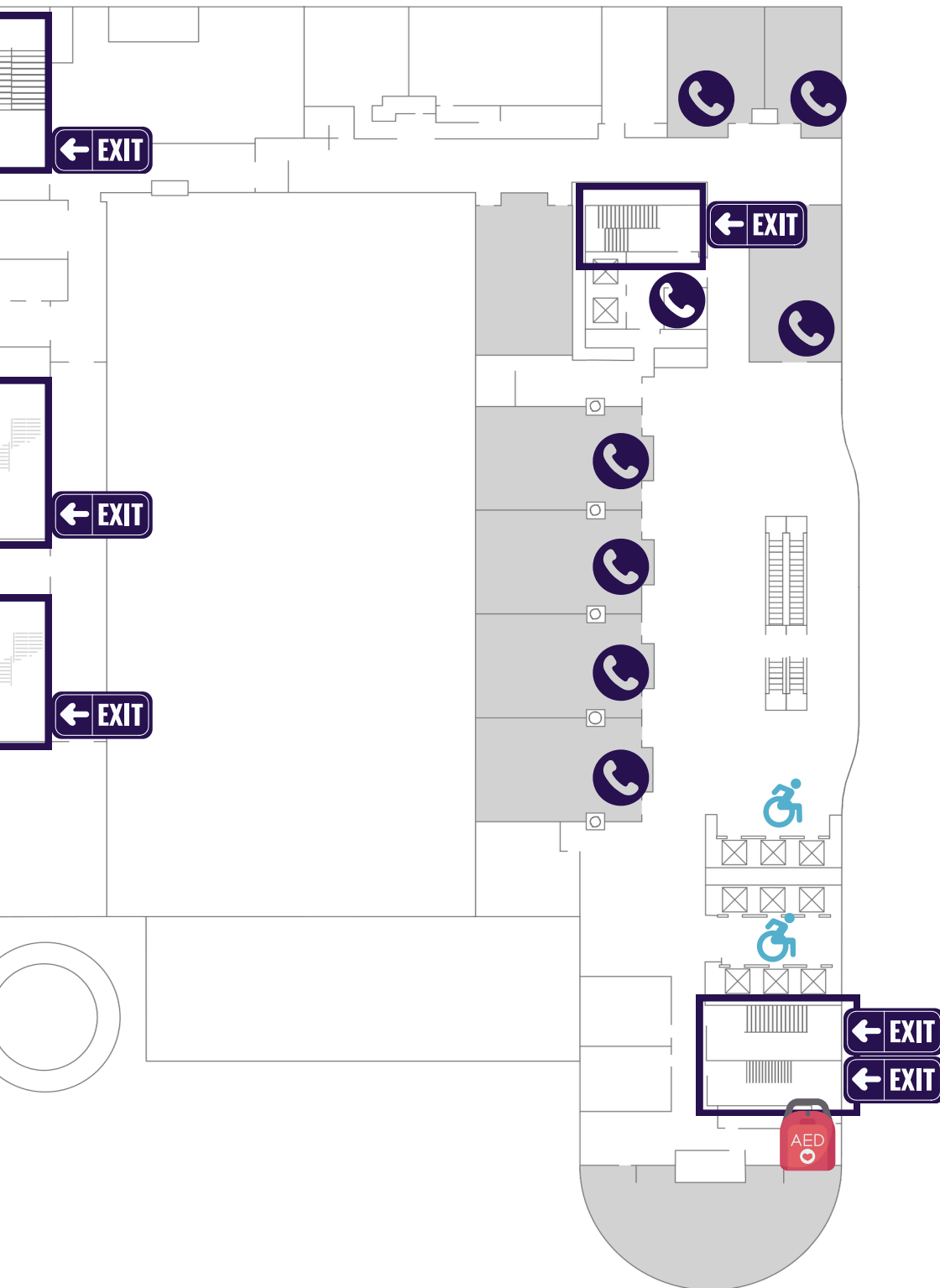
◆ For **Non-Emergency Security** matters, call Security at **4007**


◆ In the event of an Emergency, all direction will be given by the Event Planning Manger or Security


◆ Emergency Push For Help Locations are located at each elevator landing on all guestroom floors


-  Emergency Exit
-  AED
-  House Phone
-  Emergency Push For Help


Level 3



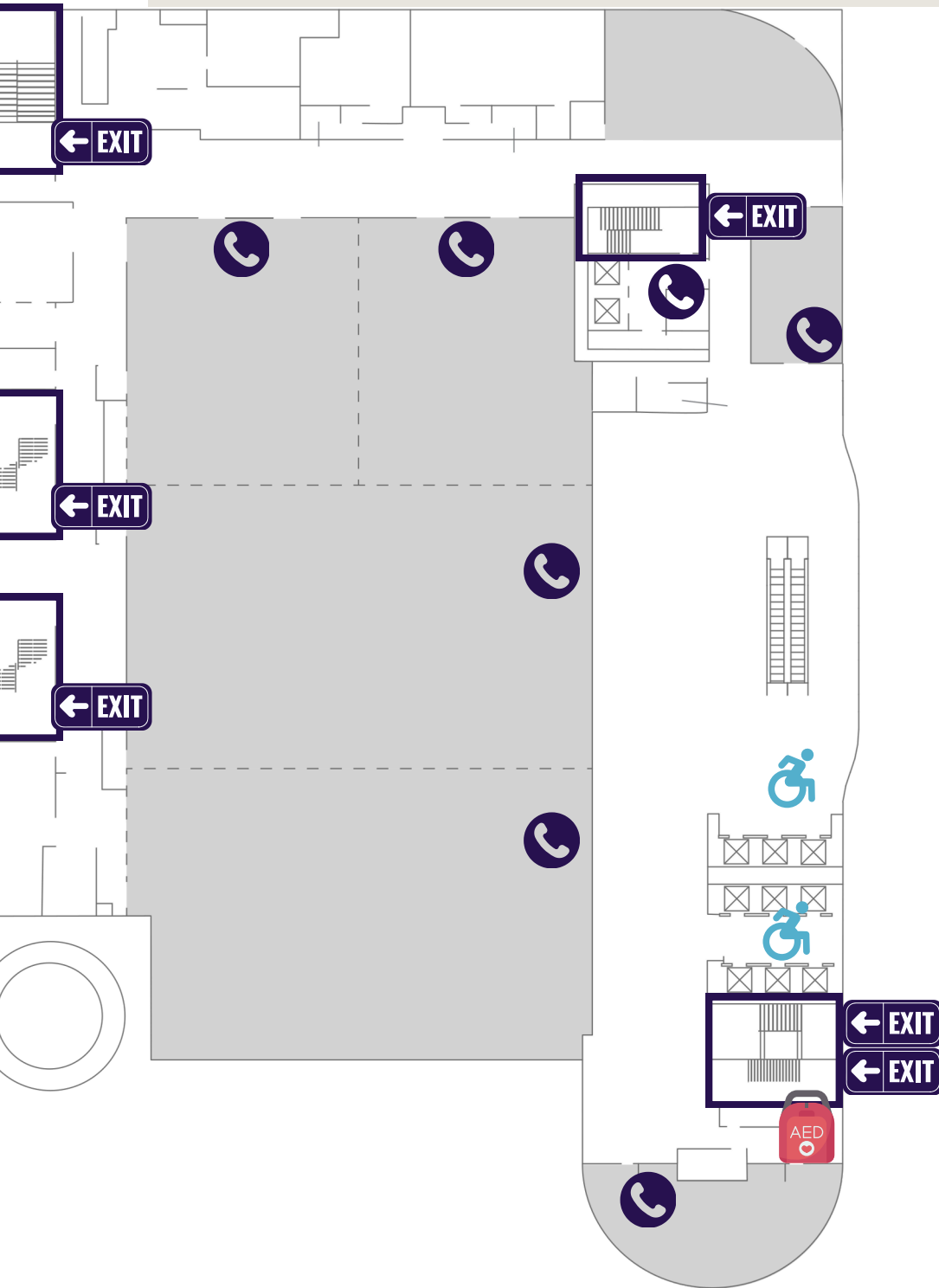
 Emergency Exit


 AED


 House Phone


 Emergency Push For Help


Level 4



 Emergency Exit

 AED

 House Phone

 Emergency Push For Help